

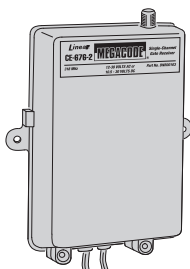
CE-676-2

DIGITAL DOOR RECEIVER

Installation Instructions

CURRAN
Engineering Co., Inc.
28727 Industry Dr, Valencia, CA 91355
(800) 643-6353 Fax 818-782-5979
www.curranengineering.com
sales@curranengineering.com

MEGACODE®



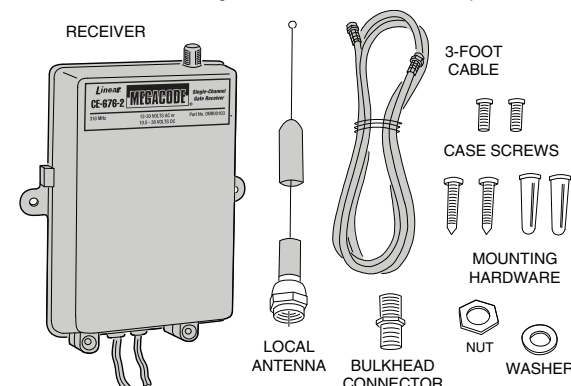
Description

The MegaCode series of digital receivers are wireless radio controls designed for use with automatic door operators. The MegaCode radio format provides unparalleled security.

MegaCode receivers and transmitters do not contain a typical "coding switch". Each transmitter is pre-set at the factory to a unique code. The receiver is programmed by sending a signal to it from the transmitter(s) that are going to be used with it. This stores the transmitters code into the receiver's memory. The receiver will retain its memory even without power. The receiver will activate only from these "memorized" transmitters. **Each MegaCode receiver can remember a maximum of 40 transmitters.**

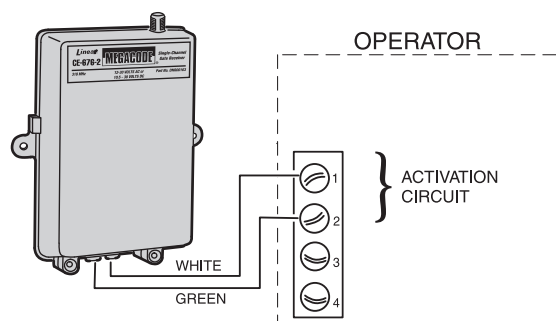
The receivers can operate from 12-30 volts AC or 10.5-30 volts DC and are normally powered from the door operator. The relay contact(s) are rated at 5 amps @ 32 volts AC/DC NEC Class 2 circuit.

The CE-676-2 series has an "F" connector for attaching an antenna. The receiver is supplied with a 9-inch local antenna, a three foot 75 ohm coaxial cable, and a bulkhead connector for mounting the antenna outside the door operator enclosure



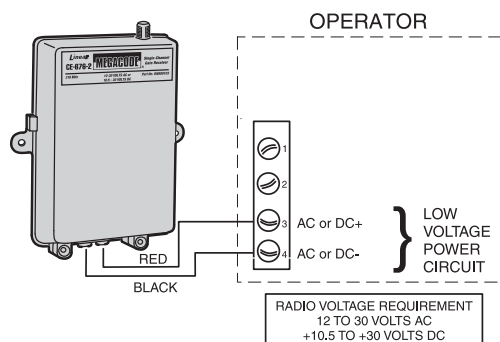
STEP 1 Connect receiver relay output

Connect the appropriate wires (GREEN), (WHITE) to the appropriate activation terminals on the door operator.



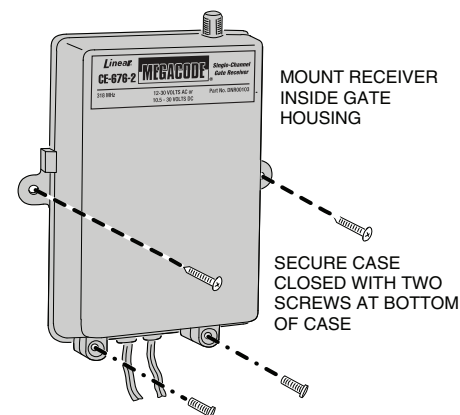
STEP 2 Connect receiver to power

Connect the (RED) input wire to the AC or DC+ and the (BLACK) wire to the AC or DC- terminal on the door operator.



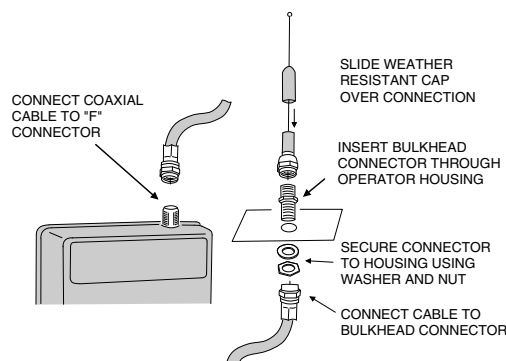
STEP 3 Mount the receiver

Use the screws provided to mount the receiver within the operator housing. This provides protection from the elements. Secure case with case screws.



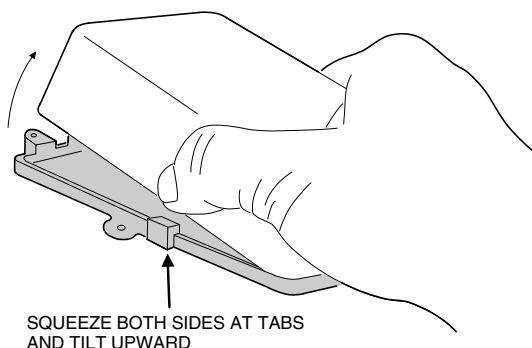
STEP 4 Connect antenna

Connect the coaxial cable to the "F" connector on the receiver. Drill a 3/8" hole on the top of the operator housing for the bulkhead connector. Insert the connector and secure it with the nut and lock washer. Connect the cable and antenna to the bulkhead connector.



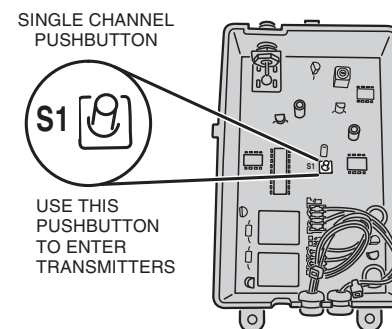
STEP 5 Open receiver case

To open the receiver case, remove the screws, squeeze sides of case and rotate upward.



STEP 6 CE-676-2 code switch

The pushbutton labeled S1 is used to program transmitters.

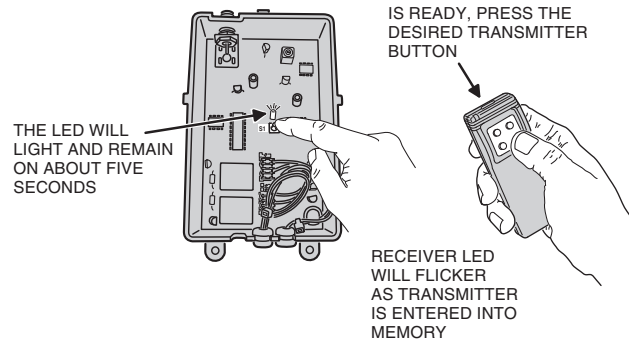


STEP 7 Program the receiver

Momentarily press the receiver's program button. The red programming LED will light if there's room in the receiver's memory for another transmitter (40 maximum per receiver). The LED stays on for about 5 seconds. **A transmitter must be entered while the LED is on.** Press the desired transmitter button. The LED will flicker indicating that the receiver has accepted the transmitter

- **NOTE:** be sure to press the receiver program button for less than 2 seconds.
- **WARNING!** Operator will not activate when the receiver is being programmed from the transmitter, but will activate the next time the transmitter is activated after programming.
- **NOTE:** The programming LED also monitors radio signals entering the receiver. It is common to see an occasional blink from the LED. The LED will also light when any transmitter tuned to the receiver's frequency (programmed into the receiver or not) is activated.

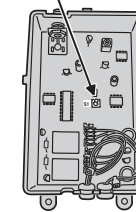
MOMENTARILY PRESS
THE PUSHBUTTON (S1)



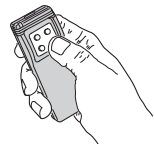
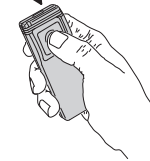
STEP 8 Add additional transmitters

Repeat Step 7 for each transmitter used with this receiver. Be sure to press the receiver's program button **each time a new transmitter or a different transmitter button on a multi-button transmitter is pressed.** If the LED doesn't come on when the receiver's program button is pressed, the receiver's memory is full (40 transmitters total). Use the erase function (INFO 1) to remove transmitters from the receiver's memory.

PRESS
PROGRAM
BUTTON FIRST



THEN PRESS
TRANSMITTER
BUTTON

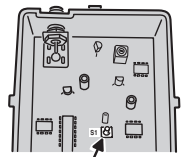


WITH MULTI-BUTTON
TRANSMITTERS,
PRESS THE DESIRED
BUTTON

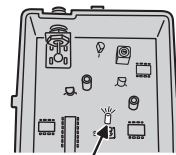
STEP 9 Review memory

Press and hold the receiver's program button until the LED begins to flash (about 3 seconds) and then release the button. Count the number of flashes. The number of flashes equals the number of transmitters programmed into the receiver

- **NOTE:** Don't hold down the programming button longer than 5 seconds or the receiver's memory for that channel will be erased (INFO 1).



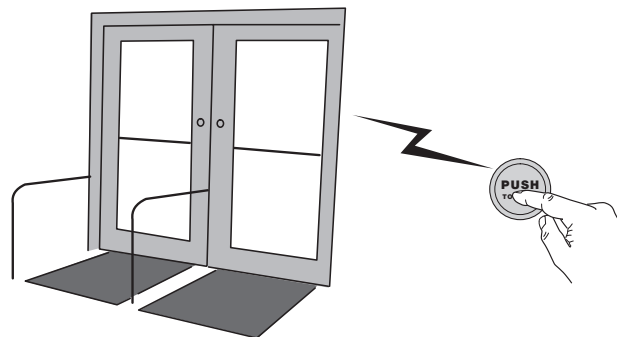
PRESS PROGRAM BUTTON
FOR THREE SECONDS
THEN RELEASE



LED WILL FLASH, COUNTING THE
TOTAL NUMBER OF TRANSMITTERS
PROGRAMMED

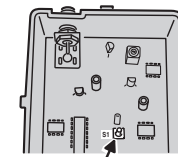
STEP 10 Test receiver

Be sure door area is clear. Activate each transmitter. The receiver relay should click and the operator should activate. **Wait 1 second between each activation.**

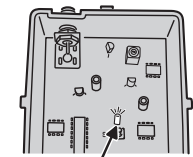


INFO 1 Erasing receiver memory

Transmitters may be erased from the receiver's memory by pressing and holding the receiver's program button until the LED blinks (count of transmitters) and then blinks one more time (Channel 1) or two more times (Channel 2) as the receiver's memory is erased. **All transmitters are erased at the same time.** Then release the program button.



PRESS PROGRAM BUTTON
FOR FIVE SECONDS OR
MORE



LED WILL FLASH, COUNTING THE
TOTAL NUMBER OF TRANSMITTERS
PROGRAMMED. THEN IT WILL
BLINK ONCE (CHANNEL ONE) OR
TWICE (CHANNEL TWO) AS THE
TRANSMITTERS ARE ERASED

- **NOTE:** If the receiver's LED flashes continuously when a transmitter isn't being activated, the receiver is too close to an electrical noise source. Move the receiver away from the noise source or call technical services for assistance. (The receiver must be open to observe this.)

LIMITED WARRANTY

This product is warranted against defects in material and workmanship for twelve (12) months.

IMPORTANT!!!

These radio controls provide a reliable communications link and fill an important need in portable wireless signaling. However, there are some limitations which must be observed.

- * For U.S. installations only: The radios are required to comply with FCC Rules and Regulations as Part 15 devices. As such, they have limited transmitter power and therefore limited range.
- * A receiver cannot respond to more than one transmitted signal at a time and may be blocked by radio signals that occur on or near their operating frequencies, regardless of code settings.
- * Changes or modifications to the device may void FCC compliance.
- * Infrequently used radio links should be tested regularly to protect against undetected interference or fault.
- * A general knowledge of radio and its vagaries should be gained prior to acting as a wholesale distributor or dealer, and these facts should be communicated to the ultimate users.